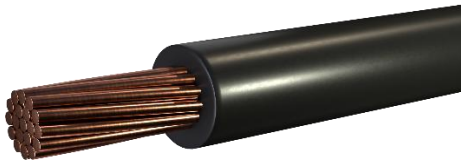


RWU90 (-40°C) XLPE 1000 Volts 90°C Copper



Single copper conductor with extra thickness of low temperature moisture resisting cross-linked polyethylene insulation. Rated 1000 volts

Specifications and Compliance: CSA C22.2 N° 38.

Flame test compliances: None

Ready Wire Item Number	AWG Size	Stranding	Insulation (inches)	Ampacity (30°C Ambient) Free Air (amps)	Ampacity (30°C Ambient) Conduit# (amps)	Nominal O.D. (inches)	Total Weight (lbs/km)
RWU14ST	14	7 Strand	0.06	20	15	0.19	75
RWU12ST	12	7 Strand	0.06	25	20	0.21	105
RWU10ST	10	7 Strand	0.06	40	30	0.24	151
RWU08ST	8	7 Strand	0.08	70	45	0.31	249
RWU06ST	6	7 Strand	0.08	100	65	0.35	361
RWU04ST	4	7 Strand	0.08	135	85	0.39	538
RWU03ST	3	7 Strand	0.08	155	105	0.42	659
RWU02ST	2	7 Strand	0.08	180	120	0.45	810
RWU01ST	1	19 Strand	0.095	210	140	0.52	1,266
RWU001ST	1/0	19 Strand	0.095	245	155	0.56	1,165
RWU002ST	2/0	19 Strand	0.095	285	185*	0.6	1,568
RWU003ST	3/0	19 Strand	0.095	330	210	0.65	1,942
RWU004ST	4/0	19 Strand	0.095	385	235	0.71	2,414
RWU250ST	250	37 Strand	0.11	425	265	0.79	2,871
RWU300ST	300	37 Strand	0.11	480	295	0.84	3,405
RWU350ST	350	37 Strand	0.11	530	225	0.89	3,940
RWU400ST	400	37 Strand	0.11	575	245	0.94	4,469
RWU500ST	500	37 Strand	0.11	660	295	1.02	5,528
RWU600ST	600	61 Strand	0.125	740	455	1.13	6,640
RWU750ST	750	61 Strand	0.125	845	500	1.23	8,219
RWU1000ST	1000	61 Strand	0.125	1000	585	1.38	10,840

All dimensions are nominal and are subject to normal manufacturing tolerance. Specifications are subject to change without notice.

*Ampacities based on CEC 2021, Table 2

RWU90 (-40°C) XLPE 1000 Volts 90°C Copper

Colour Coding

- Available in standard colours

Features

- Rated at 90°C dry & wet
- Excellent crush resistance
- Excellent moisture and chemical resistance

Application

- RWU90 cables are primarily used for underground power distribution rated 1000v or less.
- They may be used in wet or dry locations
- Suitable for direct burial with inspection authority approval
- S/R rated coloured insulation #6awg and larger available upon request.

Technical notes

- *For 3-wire 120/240 and 120/208V residential services or sub-services, the allowable ampacity for sizes #6, #2 and #4/0 AWG aluminum shall be 60, 100 and 200 amperes respectively. #2/0 AWG copper shall be 200amperes. In these cases, the 5% adjustment per C.E. Code Rule 8-106(1) cannot be applied.
- # Based on not more than 3 copper or aluminum conductors in raceway or cable. For 1 conductor per underground duct installation ampacities contact Ready Wire.
- Standard Black #8 and larger is sunlight resistant and marked "Outdoor"and S/R; coloured insulation is NOT unless marked "SR" or "Sun Res".