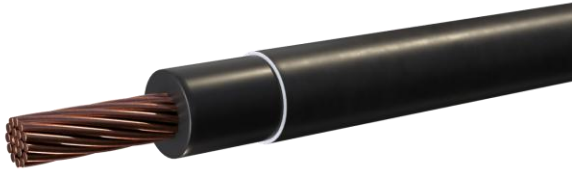


# T90 Nylon/TWN75 600 Volts 90°C



Single copper conductor with thin wall PVC insulation and nylon covering. Rated 600 volts, and FTI. CSA Spec C22.2 No. 75-M1983

Ready Wire Catalogue Number	No. Conductor	Conductor AWG Size	Conductor Stranding	Insulation (inches)	Nylon (inches)	Ampacity (30°C Ambient) (amps) Free Air Wet	Ampacity (30°C Ambient) (amps) Conduit# Wet	Nominal O.D. (inches)	Total Weight (lbs/km)
TH14SL	1	14	Solid	0.015	0.004	20	15	0.11	49
TH12SL	1	12	Solid	0.015	0.004	25	20	0.12	76
TH10SL	1	10	Solid	0.02	0.004	40	30	0.15	121
TH14ST	1	14	19 Strand	0.015	0.004	20	15	0.11	53
TH12ST	1	12	19 Strand	0.015	0.004	25	20	0.13	79
TH10ST	1	10	19 Strand	0.02	0.004	40	30	0.17	128
TH08ST	1	8	19 Strand	0.03	0.005	65	45	0.22	213
TH06ST	1	6	19 Strand	0.03	0.005	95	65	0.26	322
TH04ST	1	4	19 Strand	0.04	0.006	125	85	0.33	515
TH03ST	1	3	19 Strand	0.04	0.006	145	100	0.36	633
TH02ST	1	2	19 Strand	0.04	0.006	175	115	0.39	787
TH01ST	1	1	19 Strand	0.05	0.007	195	130	0.45	994
TH001ST	1	1/0	19 Strand	0.05	0.007	230	150	0.49	1,234
TH002ST	1	2/0	19 Strand	0.05	0.007	265	175	0.53	1,532
TH003ST	1	3/0	19 Strand	0.05	0.007	310	200	0.58	1,906
TH004ST	1	4/0	19 Strand	0.05	0.007	360	230	0.64	2,375
TH250ST	1	250	37 Strand	0.06	0.008	405	255	0.71	2,821
TH300ST	1	300	37 Strand	0.06	0.008	445	285	0.76	3,353
TH350ST	1	350	37 Strand	0.06	0.008	505	310	0.81	3,889
TH400ST	1	400	37 Strand	0.06	0.008	545	335	0.85	4,413
TH500ST	1	500	37 Strand	0.06	0.008	620	380	0.94	5,473
TH600ST	1	600	61 Strand	0.07	0.009	695	427	1.04	6,584
TH750ST	1	750	61 Strand	0.07	0.009	795	488	1.14	8,192

All dimensions are nominal and are subject to normal manufacturing tolerance. Specifications are subject to change without notice.

# T90 Nylon/TWN75 600 Volts 90°C

Colours: Standard colours are available.

- T90/TWN75 is NOT sunlight resistant. # Based on not more than 3 copper conductors in raceway or cable.
- For 3-wire 120/240 and 120/208V residential services or sub-services, the allowable ampacity for #2/0 AWG copper shall be 200 amperes. In these cases, the 5% adjustment per C.E. Code Rule 8-106(1) cannot be applied.

Applications:

- General purpose building wire for installation as exposed or concealed wiring and in raceways (except cable troughs) in dry or damp locations.
- Minimum recommended installation temperature minus 10°C (with suitable handling procedures). Maximum conductor temperature 90°C dry, 75°C in wet locations, and 60°C when exposed to oil.
- Approved for use with ceiling fixtures.