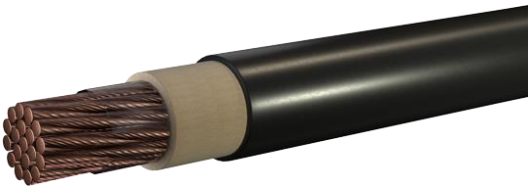


DLO Diesel Locomotive 2kv / RW90 CSA 1000V



Annealed flexible stranded tinned copper conductors. All sizes except 14awg have a tape separator between the conductor and insulation to facilitate stripping. Insulation is Ethylene propylene rubber (EPR). The jacket is made of a black heavy-duty Chlorinated Polyethylene (CPE).

Specifications and Compliance

CSA C22.2 No. 38 CSA C22.2 No. 230; UL 44, UL 1685, IEEE-1202, ASTM B-172, ASTM B-174, ASTM B-33, AAR

Flame test compliances: FT4 *RP-588, RP-586*

RW Item #	Conductor				Insulation Thickness (inches)	Jacket Thickness (inches)	Approx O.D. (inches)	Total Weight (lbs/km)
	No.	AWG Size	Stranding	AMPS*				
DLC14-01	1	14	19 x 27	35	.045	.015	.192	105
DLC12-01	1	12	19 x 25	40	.045	.015	.215	147
DLC10-01	1	10	27 x 24	55	.045	.030	.277	200
DLC08-01	1	8	41 x 24	80	.055	.030	.302	315
DLC06-01	1	6	65 x 24	105	.060	.030	.370	442
DLC04-01	1	4	105 x 24	140	.060	.030	.424	705
DLC02-01	1	2	168 x 24	190	.060	.045	.528	1,063
DLC01-01	1	1	255 x 24	220	.080	.045	.613	1,496
DLC001-01	1	1/0	273 x 24	260	.080	.045	.671	1,692
DLC002-01	1	2/0	329 x 24	300	.080	.045	.711	1,968
DLC003-01	1	3/0	450 x 24	350	.080	.045	.787	2,674
DLC004-01	1	4/0	551 x 24	405	.080	.065	.884	3,084
DLC262-01	1	262	664 x 24	470	.090	.065	.950	3,645
DLC313-01	1	313	772 x 24	510	.090	.065	1.015	4,370
DLC373-01	1	373	925 x 24	590	.090	.065	1.086	5,042
DLC444-01	1	444	1091 x 24	655	.090	.065	1.169	5,909
DLC535-01	1	535	1325 x 24	730	.090	.065	1.220	7,264
DLC646-01	1	646	1584 x 24	815	.090	.065	1.311	8,504
DLC777-01	1	777	1925 x 24	905	.090	.065	1.397	10,046
DLC929-01	1	929	2281 x 24	1005	.090	.065	1.511	12,054
DLC1111-01	1	1111	2727 x 24	1115	.140	.095	1.799	14,692

*Amps based on single conductor in free air, 30° C ambient temperature, 90° C conductor temperature Per NEC Table 310.17 Bending Radius: For fixed minimum 4xD Minimum 6 x D, D- outer diameter of cable

All dimensions are nominal and are subject to normal manufacturing tolerance. Specifications are subject to change without notice.

DLO Diesel Locomotive 2kv / RW90 CSA 1000V

Approvals

- CSA: CSA C22.2 No. 38 CSA C22.2 No. 230; RW90° C FTI, FT4, -40° C,
- 1/0AWG and larger, Oil Res, Tray Cable, S/R
- C(UL): E193954 Type RW90 EP, 1kV FTI
- UL: E193954, UL 44, UL 1685 RHW-2 90° C wet and dry, VW-1 S/R
- 1/0 and larger STI, FT4 IEEE 1202, for CT use
- MSHA: P-7268080-01

Colour Coding

- Black CPE Jacket

Features

- Rated 2kv DLO, 1kv RW90. 90° C (dry), 90° C (wet)
- Ozone, sunlight, oil, grease, weather, chemical and abrasion resistant
- Rated RW90-TC (Tray Cable) for sizes 1/0 and larger
- MSHA, VW-1, SUN RES, FOR CT USE for sizes 1/0AWG and larger and for black jacket
- Limited Smoke (LS) STI in accordance with (UL) 1685
- CSA listed RW90, RW90-TC (for black jacket) 1kv

Applications

Designed for use requires a flexible heavy duty power cable in portable or fixed installations.

- Rail and transit cars
- Diesel-Electric locomotive traction motor leads
- Leads for motors, generators
- Rail and transit cars
- batteries, jumper cables.
- Deep well Submersible Pump Cable
- Cranes and hoists
- Mining and other industrial equipment
- Electrical generation and other utility facilities
- Heavy electric earth-moving equipment
- Offshore oil drilling platforms
- On-Shore drilling rigs
- Shipyard welding and other high draw machines
- Telecommunications power supply leads
- Renewable energy power supply leads

All dimensions are nominal and are subject to normal manufacturing tolerance. Specifications are subject to change without notice.