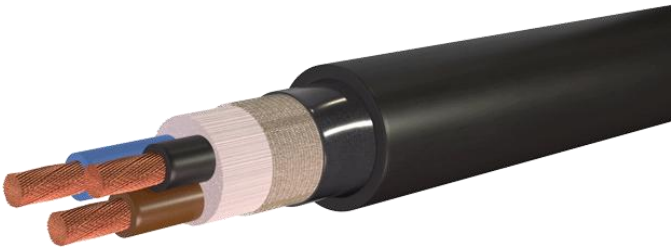


SHIPBOARD CABLE 1.5mm² -3c LSZH 1000v



3C 1.5 MM² (16 AWG) BARE COPPER, XLPE Insulation, 5 mil thick fiber glass tape, black sun resistant, Black low smoke zero halogen jacket. Suitable for use in 90C WET/DRY

Specifications and Compliance Lloyd's Register, ABS & Transport Canada approved, IEC 60092-350, IEC 60754-1, IEC 61034-1&2, IEC 60092-376, SF# SE010E3A03F0801

Flame Propagation Test Rating: IEC 60332-3-22 Category 'A'

RW Item Number	Cond. Guage	Copper Conductor	Insulation Thickness	Diameter of Conductor	Average Outer Jacket Thickness	Nominal Overall	Nominal Overall
	In mm ²	Stranding Class 5	Inches	Inches	Inches	Cable Dia. Inches	Cable Weight Kg/Km
MARNZ-1.5MM-3C	1.5	30x.0098"	0.028	.120	.045	.376	130

Ampacity	Max. DC Cond. Res.	Capacitance Conductor to Conductor	Max. Pulling Tension	Max. Pulling Tension	Min. Bending Radius	Min. Bending Radius	Nominal Cable Lay
@ 45 °C (Amps)	Ohms/MFT @ 25 °C	Pf/ft	Pulling Grips LBS	Pulling Eyes LBS	Permanent Inches	Pulling Inches	Inches
16	4.180	12.9	47	68	2.3	3.4	1.0

Ampacity value based on ABS Rules for Building and Classing Steel Vessels, Version 2009, Table-6. Values are corrected according to Table-6 for number of Conductors

Colour Code

- 3C- Brown, blue & black

Features

- Rated at 90°C wet & dry
- -35C Cold Impact, -40C Cold Bend
- Low smoke-zero halogen jacket
- Transport Canada Approved

Application

- Power, communication, control, lighting, electronic, instrumentation, and special-purpose applications in shipboard applications